

Council Tax Band

A

Energy Performance Graph

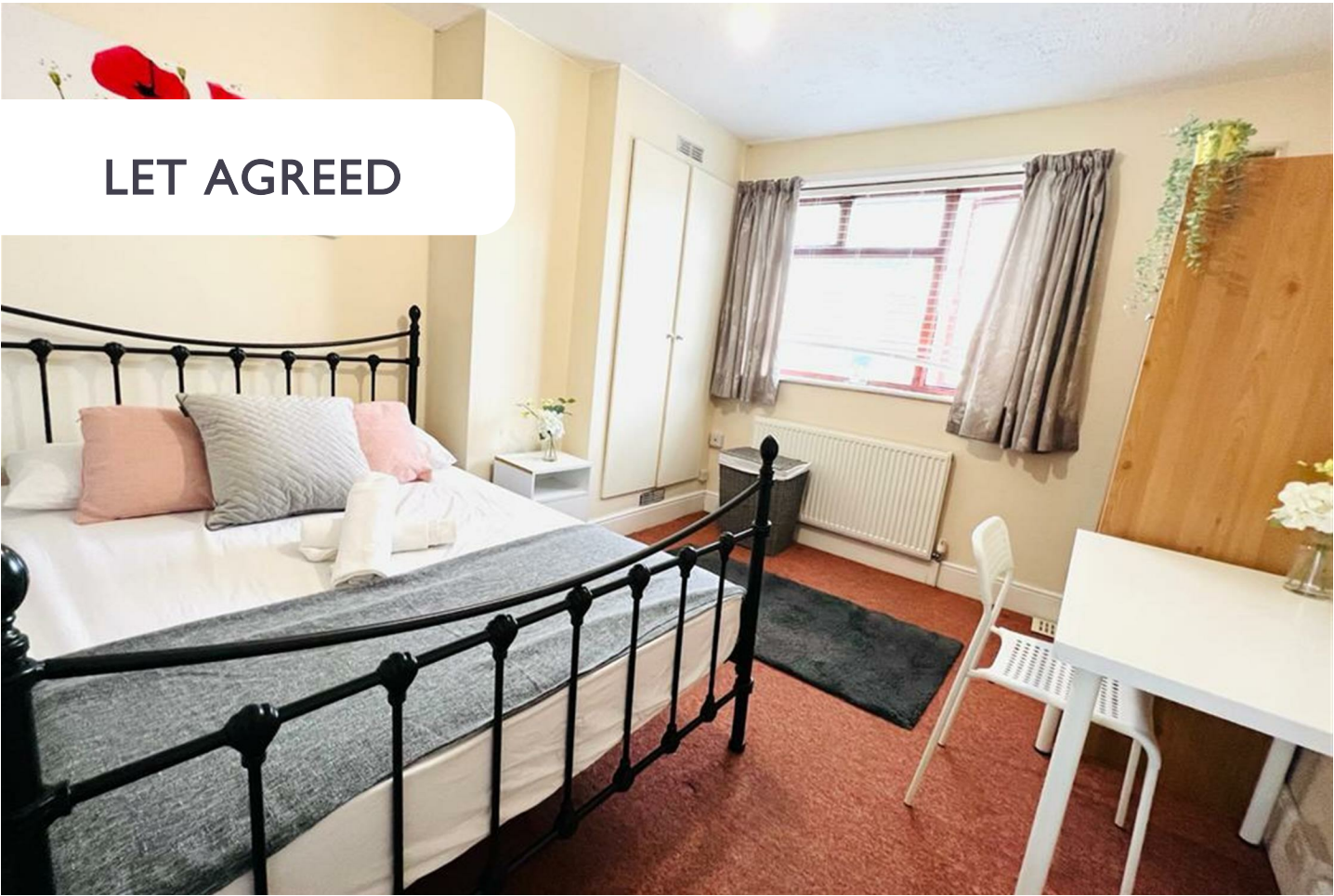


Call us on

02078460308

info@stonebanks.co.uk
www.stonebanks.co.uk

Agents Note: Whilst every care has been taken to prepare these particulars, they are for guidance purposes only. All measurements are approximate and are for general guidance purposes only and whilst every care has been taken to ensure their accuracy, they should not be relied upon and potential buyers are advised to recheck the measurements.



HOUSE SHARE (EPC RATING:)

FALLING LANE, YIEWSLEY, WEST DRAYTON,
UB7 8AA
PER MONTH
£700 PER MONTH



null Bedroom House Share located in West Drayton

Welcome to this charming property located in the heart of Yiewsley, London. London situated on falling lane , this property offers a cosy and comfortable living space perfect for professional tenants.

Boasting 1 bedroom and 1 bathroom, this property provides just the right amount of space for a student to study, relax, and unwind. The bedroom offers a peaceful retreat, while the bathroom ensures convenience and privacy.

Being a student property, this home is designed to cater to the needs of a student lifestyle. With its convenient location, it offers easy access to local amenities, transport links, and educational institutions, making it an ideal choice for those pursuing their academic goals.

Don't miss out on the opportunity to make this property your own. Contact us today to arrange a viewing and take the first step towards a comfortable and convenient living experience in London.

